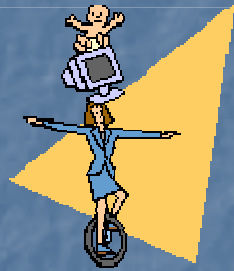


# NEELB Parenting Initiatives 1999-2008

Ms Breige Devlin  
NEELB Early Years/Parenting Officer  
23<sup>rd</sup> May 2008

# Effective Parental Partnership



# Parenting Initiatives

- Parenting Initiatives Group formed 1999
- CASS Early Years
- Youth Service
- Library Service
- Education Welfare Service
- Behaviour Support
- Primary Languages/European Projects

# NEELB seeks to promote parenting programmes which:-

- Provide information
- Enable support to be accessed
- Value the role of parents as partners in their child's development
- Meet the identified needs of parents
- Empower parents-social learning theory

# Aims for Parenting

- To co-ordinate provision of parenting support through NEELB area departments when possible/appropriate
- To communicate with other agencies involved in supporting parents within the NEELB area
- To engage with other agencies and across ELB departments in order to:

- Identify need
  - Plan in a co-ordinated manner
  - Provide parenting support
- 
- To support parents/carers as the children's prime educators and to provide opportunities for parents/carers to feel valued and to build on existing skills to increase their effectiveness

# Parenting Projects Early Years

- DELTA 2000-2003
- Parenting Projects 2004
- 'Building Together in the Foundation Stage'- 2007
- Proposed 'Building Together in The Nursery' -2008

# Parental Partnership In Northern Ireland Curriculum



# Partnerships with other Agencies

- Parents Advice Centre
- Barnardos
- CASS Numeracy
- CASS Literacy
- Library Service
- Men's Action Network
- Northern Health and Social Services Board
- Other relevant agencies

It takes a whole community to  
raise a child

# DISCUSSION GROUPS



## Socrates

This project has been funded with support from the European Commission.

This publication [communication] reflects the views only of the author, and the Commission cannot be held responsible for any use which may be made of the information contained therein.